

2022

UAMS Health

REFERRING PHYSICIAN  
QUICK REFERENCE



# MESSAGE FROM DR. SEUPAUL

Dear Colleagues,

Across Arkansas, health care professionals of all stripes continue to go the distance. If there was any doubt the COVID-19 pandemic would be a marathon rather than a sprint, we are certain now, but I am encouraged to see how many of you are still alongside me in the race.

First, I want to acknowledge your sacrifices. You persevere, despite the challenges, exhaustion, discomfort, fear, burnout and impact on our families. When I walk the halls at UAMS and look into the eyes of my peers, I see a profound level of unity and understanding. This is a race we

are running together, and those on either side of you know exactly how it feels. Even though I am not in your presence, I often imagine a similar recognition

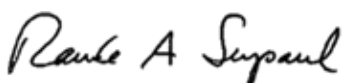
WHEN WE  
CROSS THAT  
FINISH LINE, I  
LOOK FORWARD  
TO SEEING YOU  
ALL THERE  
BESIDE ME.

in the faces of every health care worker in the state - a level of shared humanity that our masks and face shields don't hide, rather accentuate.

Second, I can offer no assurances for the future, only this: I believe in our profession. Medicine is grounded in fundamental principles that have propelled human history to its greatest heights and aided us in our greatest times of need. I am confident that this pandemic will be no different.

When we cross that finish line, I look forward to seeing you all there beside me.

Thank you,



Rawle A Seupaul, MD

## PHYSICIAN RELATIONS & STRATEGIC DEVELOPMENT

UAMS Physician Relations & Strategic Development serves as liaison between UAMS physicians and community providers. Our goal is to improve the UAMS patient referral process for you and to provide you and your staff with the most up-to-date UAMS resources. Please visit our website for referring physicians: [UAMS.Health/MD](https://www.uams.edu/Health/MD)



### **Rawle A Seupaul, MD**

Chief Clinical Officer  
Stanley E. Reed Professor & Chair  
Department of Emergency  
Medicine  
Medical Director, Physician  
Relations & Strategic  
Development  
(501) 686-8206

[RASEupaul@uams.edu](mailto:RASEupaul@uams.edu)



### **Melanie Meyer, MEd**

Director, Physician Relations  
& Strategic Development  
(501) 686-8206

[melanie@uams.edu](mailto:melanie@uams.edu)



### **Carla Alexander, MEd**

Manager, Physician Relations  
& Strategic Development  
(501) 686-7934

[carla@uams.edu](mailto:carla@uams.edu)



### **Byron Jarrett**

Liaison, Physician Relations  
& Strategic Development  
(501) 603-1440

[byron@uams.edu](mailto:byron@uams.edu)



### **Wendy Sheridan**

Liaison, Physician Relations  
& Strategic Development  
(501) 686-6051

[wendy@uams.edu](mailto:wendy@uams.edu)

Physician Resources .....	2
UAMS Referring Physician Website .....	2
EpicCare .....	2
UAMS Physician Call Center .....	2
SHARE.....	3
 Appointment Quick Reference	
Central Arkansas .....	4
Northwest Arkansas .....	8
Regional Campuses .....	9
Interpreter Services.....	9
 UAMS Key Telephone Numbers .....	10
 Learn on Demand.....	11
 MedNews Plus .....	11
 Coronavirus Resources for Providers .....	12
 Preceptor Opportunities .....	12
 AR-Connect:	
A Virtual Mental Health & Substance Abuse Program .....	13
 AR Research .....	14
 Physician Recruitment & Provider Placement.....	15
 UAMS Library Databases & Resources.....	16-17
 UAMS Main Campus Map.....	18

## Website for Referring Physicians

### UAMS.Health/MD

Site includes information on:

- Appointments & Transfers
- CME - LearnOnDemand & MedNews Plus
- *The Consult*
- Coronavirus Resources
- EpicCare Link
- Referring Physician Quick Reference
- Managed Care
- Maps
- Online Appointment Request
- Physician Call Center
- Physician Directory
- Physician Recruitment & Provider Placement
- Physician Relations Staff
- UAMS Library
- Alumni Relations

## EpicCare Link

### UAMS.Health/EpicCare

**New in 2022! Appointment Requests Now Available!**

*It is free of charge, easy to sign up and convenient to use.*

**EpicCare Link** is a secure, web-based portal for referring physicians to track patient progress and treatment while at UAMS and provides secure messaging for you to offer electronic consults. First Access allows users to add patients to their accounts. Account expiration has been updated from 90 days to 180 days to make it more user-friendly.

**How to register:**

- 1 Visit **UAMS.Health/EpicCare**
- 2 Complete the EpicCare Link access request form
- 3 UAMS IT will e-mail your user name and password



## Physician Call Center

### Transfers & Consults **501-686-6080**

*Direct Number to the **Physician Call Center***

The **Physician Call Center** is staffed by experienced telephone triage RNs - **24/7, 365 days of the year.**

The Call Center nurse will ensure timely, appropriate consults for your patients, assist you with transfer requests and keep you updated when patient transfers are delayed.

You may still call 866-826-7362 or 501-686-8000 to access the Call Center, the Appointment Center, hospital operators and other areas.



## SHARE

### ShareArkansas.com

UAMS is pleased to announce its continued partnership with the Arkansas Department of Health, Office of Health Information Technology in facilitating the implementation of SHARE (the Arkansas State Health Alliance for Records Exchange), the only statewide health information exchange (HIE).

SHARE securely gathers your medical information from different health care providers and creates a more complete picture of a patients' health. Our goal is to improve the quality of health for Arkansas by enabling a more effective use of secure electronic health information exchange while improving the delivery of health care services. Visit [SHAREarkansas.com](http://SHAREarkansas.com) to learn more!

**Anne Santifer, Executive Director**

anne.santifer@arkansas.gov  
501.410.1999

**Justin Villines, HIT Policy Director**

justin.villines@arkansas.gov  
501.537.8924

For more information about SHARE and how to sign up, go to:  
[sharearkansas.com](http://sharearkansas.com).

## NEW! UAMS Baptist Health Cancer Center

Two of Arkansas' most trusted names in health care are now delivering comprehensive cancer care together.

Introducing the **UAMS Baptist Health Cancer Center** — with its first location on the Baptist Health North Little Rock campus. We offer advanced cancer treatments with the academic medicine difference, including unique clinical trials led by cancer specialists from the UAMS Winthrop P. Rockefeller Cancer Institute.

Services include:

- Medical Oncology
- Infusion Services
- Radiation Therapy

**For more information, visit [UAMSBaptist.Health/StrongerTogether](http://UAMSBaptist.Health/StrongerTogether)**

# APPOINTMENT QUICK REFERENCE

## CENTRAL ARKANSAS

### ALLERGY & IMMUNOLOGY

**New Patients:** 866-826-7362  
or 501-526-1020

**Referrals & Records Fax:**  
501-603-1538

**Return Patients:** 501-614-2948

### AUDIOLOGY

501-686-5878, Option 1

**Referrals & Records Fax:** 501-603-1539

- Hearing tests, Balance studies, Hearing aids

### CARDIOLOGY

**New Patient:** 866-826-7362  
or 501-526-1020

**Referrals & Records Fax:**  
501-603-1538

**Clinic:** 501-686-5311, Option 3

### DERMATOLOGY

**New Patients:** 866-826-7362  
or 501-526-1020

**Referrals & Records Fax:**  
501-686-8361

**Return Patients:** 501-686-5960

### DERMATOLOGY ONCOLOGY

501-686-8275

**Referrals & Records Fax:**  
501-686-8640

### DIAGNOSTIC CLINIC

866-826-7362 or 501-526-1010

**Referrals & Records Fax:**  
501-603-1537

### EMERGENCY MEDICINE

**Emergency Room:** 501-526-2085

### ENDOCRINOLOGY

866-826-7362 or 501-526-1020

**Referrals & Records Fax:**  
501-603-1538

**Return Patients:** 501-296-1220  
or 501-526-6990

### ENDOCRINE SURGERY

**New Patients:** 501-526-1030

**Referrals & Records Fax:**  
501-686-7280

**Return Patients:** 501-686-6086

### THYROID ONCOLOGY

**New Patients:** 501-686-8224

**Return Patients:**  
501-686-8224, option 1

### FAMILY & PREVENTIVE MEDICINE FAMILY MEDICAL CENTER

501-686-6560

### STUDENT EMPLOYEE HEALTH

501-686-6565

**Referrals & Records Fax:**  
501-603-1537

### GASTROENTEROLOGY

501-603-1900

**Referrals & Records Fax:**  
501-603-1539

### ADVANCED ENDOSCOPY

501-526-0865

**Referrals & Records Fax:**  
501-603-1533

### GENERAL INTERNAL MEDICINE

866-826-7362 or 501-526-1010

**Referrals & Records Fax:**  
501-603-1537

### GENETICS

501-526-4020

**Referrals & Records Fax:**  
501-603-1550

### GERIATRICS

501-686-6219

**Referrals & Records Fax:**  
501-603-1537

### HEMATOLOGY/ONCOLOGY

**New or Returning Patients:**  
501-296-1200

**Referrals & Records Fax:**  
501-603-1550



## **UAMS BAPTIST HEALTH CANCER CENTER MEDICAL ONCOLOGY CLINIC**

3401 Springhill Dr., Suite 340  
North Little Rock, AR 72117  
501-214-2170

**Referrals & Records Fax:**  
501-214-2171

## **INFECTIOUS DISEASES**

866-826-7362 or 501-526-1020

**Referrals & Records Fax:**  
501-603-1538

**Clinic:** 501-603-1616

## **MOVEMENT DISORDER CLINIC**

**Clinic:** 501-526-5364

**Referrals & Records Fax:**  
501-603-1539

## **MULTIPLE MYELOMA**

**New Patients:** 501-686-8230

**Return Patients:** 501-686-8230

**Referrals & Records Fax:**  
501-526-5906

## **NEPHROLOGY-KIDNEY CLINIC**

**New Patients:**

866-826-7362 or 501-526-1020

**Referrals & Records Fax:**  
501-603-1538

**Return Patients:** 501-661-7910

## **NEUROLOGY**

**EPILEPSY & NEUROLOGY CLINIC**

501-686-5838

**Referrals & Records Fax:**  
501-603-1539

## **NEUROSURGERY**

501-686-5270

**Referrals & Records Fax:**  
501-526-7467

## **OBSTETRICS/GYNECOLOGY**

**ANGELS CALL CENTER**

501-526-7425 or 866-273-3835

**UAMS WOMEN'S CLINIC**

866-826-7362 or 501-526-1050

## **CENTER FOR GYNECOLOGY**

866-826-7362 or 501-526-1050

## **CENTER FOR VULVAR DISORDERS**

866-273-3835 or 501-526-7425

## **OB GENETICS**

866-273-3835 or 501-525-7425

## **GYNECOLOGIC ONCOLOGY**

**New Patients:** 501-686-5669 option 3

**Return Patients:**  
501-686-5669 option 2

## **OPHTHALMOLOGY**

501-686-5822

**Referrals & Records Fax:**  
501-526-6780

## **ORTHOPAEDICS & SPORTS MEDICINE**

Autumn Road, Colonel Glen,  
Shackleford & Conway

866-826-7362 or 501-526-1046

**Referrals & Records Fax:**  
501-603-1541

## **ORTHOPAEDIC ONCOLOGY**

501-296-1200

**ACH patients:** 501-364-2946

**CONWAY UAMS BAPTIST HEALTH  
ORTHOPAEDIC CLINIC**

501-358-6792

**Referrals & Records Fax:**  
501-358-6841

## **OTOLARYNGOLOGY**

**ENT CLINIC**

**New Patients:** 866-826-7362 or 501-526-1030

**Referrals & Records Fax:**  
501-603-1539

**Return Patients:** 501-686-5878

## **HEAD & NECK CLINIC**

**New Patients:** 501-296-1200

**Return Patients:** 501-686-8224

## **CONWAY ENT CLINIC**

501-932-7600

**Referral & Records fax:**  
501-932-7603

# APPOINTMENT QUICK REFERENCE

## **PAIN CLINIC**

**Interventional** 501-686-8818  
**Referrals & Records Fax:** 501-526-4216

## **PALLIATIVE/ONCOLOGY**

**New and Return Patients:**  
501-686-8738

## **PATHOLOGY**

888-233-0327 or 501-603-1178  
**FNA Appointments:** 501-686-5655

## **PEDIATRICS**

800-777-7700 or 501-364-5901

## **PHYSICAL MEDICINE & REHABILITATION**

501-221-1311  
**Referrals & Records Fax:**  
501-603-1541

## **PSYCHIATRIC RESEARCH INSTITUTE**

501-526-8100

## **CENTER FOR ADDICTIONS SERVICES AND TREATMENT**

501-526-8400

## **CHILD STUDY CENTER**

501-364-5150  
(ACH campus)

**COUPLES CENTER** 501-526-8200

## **INPATIENT PSYCHIATRY**

501-686-6080  
(UAMS Call Center)

## **INTERVENTIONAL PSYCHIATRY/ECT**

501-526-8603

## **INTERVENTIONAL PSYCHIATRY/TMS**

501-526-8267

**NEUROPSYCHOLOGY** 501-526-8364

**STRIVE** 501-771-8261

**WALKER FAMILY CLINIC** 501-526-8200

**WOMEN'S MENTAL HEALTH CLINIC -**  
501-526-8201

## **PULMONARY**

866-826-7362 or 501-526-1020

**Referrals & Records Fax:**  
501-603-1538

**Clinic:** 501-603-1400

## **RADIATION ONCOLOGY (ROC)**

**New Patients:** 501-664-4568

**Referrals & Records Fax:**  
501-614-9880

**Return Patients:** 501-664-4568

## **UAMS BAPTIST CANCER CENTER NORTH LITTLE ROCK - RADIATION THERAPY CENTER**

3401 Springhill Dr., Suite 130  
North Little Rock, AR 72117  
501-214-2460

**Referrals & Records Fax:** 501-214-2461

## **RADIOLOGY**

### **INPATIENT, BONE SCAN, MUGA**

501-686-6661

### **OUTPATIENT APPOINTMENTS**

501-686-6190

**CT** 501-686-5777

### **INTERVENTIONAL RADIOLOGY**

501-686-6124

**MAMMOGRAPHY** 501-526-6100

**MRI** 501-686-6033

**NUCLEAR MEDICINE** 501-686-6661

### **NEURO-INTERVENTIONAL RADIOLOGY**

501-686-5745

**PET** 501-526-6526 or 501-686-8424

**ULTRASOUND** 501-686-5763

## **REHABILITATION SERVICES**

**HAND THERAPY** 501-686-6102

**PT/OT** 501-661-7955

**SPEECH PATHOLOGY** 501-686-8378

**Referrals & Records Fax:**  
501-603-1541



**RHEUMATOLOGY**

866-826-7362 or 501-526-1020

**Referrals & Records Fax:**

501- 603-1541

**Clinic:** 501-603-1919

**SLEEP CLINIC**

**Clinic:** 501-686-6443

**Referrals & Records Fax:**

501-686-6452

**SMARTCARE**

866-826-7362 or 501-686-8749

**Referrals & Records Fax:**

501-603-1426

**SURGERY**

**Pre-Op & Evaluation:** 501-603-1211

**Referrals & Records Fax:** 501-686-7618

**BREAST ONCOLOGY** 501-296-1200

**Referrals & Records Fax:**

501-603-1550

**Return Patients:** 501-686-8522

**CARDIOTHORACIC SURGERY**

501-296-1200

**Referrals & Records Fax:**

501-603-1538

**Return Patients:** 501-686-8211

**CARDIOTHORACIC SURGERY - ACH**

501-364-5858

**COLORECTAL SURGERY** 501-686-8211

**Referrals & Records Fax:**

501-603-1550

**ENDOCRINE SURGERY**

**New Patients:** 501-526-1030

**Return Patients:** 501-686-6086

**Referrals & Records Fax:**

501-686-7280

**GENERAL SURGERY** 501-526-1030

**Referrals & Records Fax:** 501-603-1539

**GENERAL SURGERY - ACH**

501-364-1446

**LUNG CANCER**

**New Patients:** 501-296-1200

**Referrals & Records Fax:**

501-603-1550

**Return Patients:** 501-686-8211

**PLASTIC**

**New Patients:** 501-686-8711

**Referrals & Records Fax:**

501-603-1539

**Return Patients:**501-526-1030

**PLASTIC - ACH** 501-364-1195

**SURGICAL ONCOLOGY - GENERAL**

501-296-1200

**Referrals & Records Fax:**

501-603-1550

**Return Patients:** 501-686-8211

**VASCULAR SURGERY** 501-686-6176

**Referrals & Records Fax:**

501- 686-5328

**TRANSPLANT**

1-800-552-8026

**KIDNEY**

501-686-6640

**Referrals & Records Fax:**

501-686-6375

**LIVER**

501-686-8962

**Referrals & Records Fax:**

501-686-5215

**SATELLITE CLINICS**

Fayetteville, Jonesboro, Texarkana &  
Pine Bluff

**Pine Bluff scheduling:** 870-541-6000

**Referral & Records fax:** 870-541-7618

**UROLOGY**

**New Patients:** 501-526-1030

**Referrals & Records Fax:**

501- 603-1539

**Return Patients:** 501-686-6324

**GENITOURINARY ONCOLOGY**

**New Patients:** 501-296-1200

**Return Patients:** 501-526-1045

**UROLOGIC PROSTHETICS**

**New Patients:**

866-826-7362 or 501-526-1030

**Return Patients:** 501-686-6324

# APPOINTMENT QUICK REFERENCE

## NORTHWEST ARKANSAS

### ADULT GENETICS

1125 N. College Avenue  
Fayetteville, AR 72703  
501-526-4020

**Referrals & Records Fax:**  
501-526-4029

### FAMILY MEDICAL CENTER

#### FAYETTEVILLE

1125 N. College Avenue  
Fayetteville, AR 72703  
479-521-8260

**Referrals & Records Fax:**  
479-443-3903

#### SPRINGDALE

601 W. Maple Ave., Ste. 102  
Springdale, AR 72764  
479-750-6585

**Referrals & Records Fax:**  
479-750-6594

### KIDS FIRST

479-750-0130  
519 Latham Drive  
Lowell, AR 72745

**Referrals & Records Fax:**  
479-750-0937

### NEIGHBORHOOD CLINIC - NORTH STREET

1125 N. College Avenue  
Fayetteville, AR 72703  
479-713-8701

**Referrals & Records Fax:**  
479-713-8719

### NORTH STREET MARSHALLESE CLINIC

1125 N. College Avenue  
Fayetteville, AR 72703  
479-713-8700

**Referrals & Records Fax:**  
479-713-8719

### BUTTERFIELD TRAIL VILLAGE CLINIC

1923 Joyce Blvd.  
Fayetteville, AR 72703  
479-695-8040

**Referrals & Records Fax:**  
479-332-4405

### ORTHOPAEDICS & SPORTS MEDICINE CLINIC

#### FAYETTEVILLE

201 W. Van Asche Loop  
Fayetteville, AR 72703  
479-966-4491

**Referrals & Records Fax:**  
479-966-4311

#### LOWELL

519 Latham Drive; Lowell, AR 72745  
479-334-7030

**Referrals & Records Fax:**  
479-966-4311

### OUTPATIENT THERAPY CLINIC

#### FAYETTEVILLE

1125 N. College Avenue  
Fayetteville, AR 72703  
479-713-8630

**Referrals & Records Fax:**  
479-713-8639

#### SPRINGDALE

2422 N Thompson St  
Springdale, AR 72764  
479-713-8630

**Referrals & Records Fax:**  
479-713-8639

### REHABILITATION SERVICES AND TRM

#### TRM FAYETTEVILLE AND TRM ROGERS

479-966-4055

#### HAND THERAPY - LOWELL

479-334-7030

#### UAMS NORTHWEST CAMPUS SPEECH/OT/PT

479-713-8630

#### PHYSICAL THERAPY - SPRINGDALE

479-750-1989

**PSYCHIATRIC RESEARCH INSTITUTE**

1125 N. College Avenue  
Fayetteville, AR 72703  
479-713-8350

**Referrals & Records Fax:**  
501-526-5296

**SCHMIEDLING DEVELOPMENT CENTER - LOWELL**

519 Latham Drive  
Lowell, AR 72745  
479-750-0125

**Referrals & Records Fax:**  
479-750-0323

**UAMS NORTHEAST  
JONESBORO**

Family Medicine Residency Program  
311 East Matthews, Jonesboro, AR 72401  
870-972-0063

**UAMS SOUTH  
MAGNOLIA**

Family Medicine Residency Program  
1617 North Washington  
Magnolia, AR 71753  
870-234-7676

**UAMS SOUTH CENTRAL  
PINE BLUFF**

Family Medicine Residency Program  
1601 West 40th Avenue  
Pine Bluff, AR 71603  
870-541-6000

**UAMS SOUTHWEST  
TEXARKANA**

Family Medicine Residency Program  
3417 U of A Way  
Texarkana, AR 71854  
870-779-6000

**REGIONAL CAMPUSES**

**UAMS NORTH CENTRAL  
BATESVILLE**

Family Medicine Residency Program  
1993 Harrison Street  
Batesville, AR 72501  
Phone: 870-793-2540

**UAMS NORTHWEST  
FAYETTEVILLE**

Family Medicine Residency Program  
1125 N. College  
Fayetteville, AR 72703  
479-521-8260 (Fayetteville)  
479-750-6585 (Springdale)

**UAMS WEST  
FORT SMITH**

Family Medicine Residency Program  
612 South 12th Street  
Fort Smith, AR 72901  
479-785-2431

**UAMS EAST  
HELENA**

1393 Highway 242 South  
Helena, AR 72342  
870-572-6507

**UAMS Institute for Digital Health & Innovation  
INTERPRETER PROGRAM**

*Now serving other healthcare facilities and clinics throughout Arkansas!*

Since 2010, **IDHI Interpreter Program** has served close to 100 clinics and departments at UAMS.

The program facilitates communication between patients, families and healthcare professionals. Interpreters have a high level of competence and experience.

For more information, call 501-526-0399, or email us at [IDHI@UAMS.edu](mailto:IDHI@UAMS.edu).

# KEY TELEPHONE NUMBERS

## TRANSFER NUMBERS

\*UAMS Physician Call Center  
501-686-6080 or 866-UAMS-DOC

**Appointment Center**.....501-526-1000

## Hospital

### Department Phone Numbers

Administration 603-1452  
Admissions 686-6236  
Admission Assessment Area ..... 526-3661  
Bed Control (Resource Mgmt.) ..... 686-5641  
Breast Center ..... 526-7300  
    Clinical Decision Unit ..... 686-7557  
Care Management ..... 686-5870  
Cath Lab ..... 526-3280  
Clinical Lab (for results) ..... 686-6230  
Dialysis ..... 526-3750  
Emergency Department ..... 526-2085  
    Clinical Decision Unit ..... 686-7557  
Hand Therapy Rehabilitation ..... 686-6102  
Hospital Operator ..... 686-7000  
Hospital Risk Management ..... 603-1150  
Interventional Radiology ..... 686-6124  
Medical Records .....  
603-1520  
Occupational Therapy Inpatient ... 686-6120  
One Day Surgery .....  
320-7168  
OR Front Desk ..... 526-3200  
Patient Relations/Advocate ..... 296-1039  
Patient Safety ..... 296-1039  
Pharmacy (inpatient) ..... 686-6221  
Pharmacy (outpatient) ..... 686-5530  
Physical Therapy Inpatient ..... 686-6120  
Physical & Occupational Therapy Outpatient  
    At Spine Institute ..... 661-7955  
    At Aging Institute ..... 526-5770  
Physician Relations ..... 603-1440  
Pre-Op ..... 526-3240  
Psychiatric Research Institute ..... 526-8200  
Quality Management ..... 296-1325  
Radiology ..... 686-5750  
Respiratory Manager's pager ..... 405-8059  
    Office ..... 686-7200

Risk Management ..... 296-1039  
Security (UAMS Police) ..... 686-7777  
Speech Therapy Outpatient ..... 686-8378  
Speech Therapy Inpatient ..... 686-6120  
Surgery (Info) ..... 686-7653  
Scheduling (Main OR) 614-2900 x1101/x1102  
Kidney Transplant ..... 686-6640  
Liver Transplant ..... 686-8962  
PACU (recovery room) ..... 526-3242  
Arkansas Poison Center ..... 1-800-3POISON

## Nursing Units

Emergency Room ..... 526-2085  
A7 Antepartum ..... 686-7750  
E4 Medical/Neuro ICU ..... 526-0400  
E5 LDR/Triage ..... 526-0500  
E6 Perinatal Unit .....  
526-0600  
E7 Medical Oncology Overflow ... 526-0700  
F7 Medical Oncology Transplant .526-1700  
F4 Progressive Care ..... 526-1400  
F5 Neonatal ICU .....  
526-1500  
F6 Cardiac Progressive Clinic ..... 526-1600  
F8 Cardiac Progressive Care ..... 526-1800  
F9 Surgical Specialties ..... 526-1900  
H4 TSICU/CVICU ..... 526-3400  
H5 Neonatal ICU ..... 526-1500  
H6 Short Stay ..... 526-3600  
H7 Medical Oncology ..... 526-3700  
H8 Neurology / Neurosurgery ..... 526-3800  
H9 Nephrology/Surgical Svcs ..... 526-3900

## Other/Campus

Chancellor's Office ..... 686-5680  
Dean's Office ..... 686-5350  
Chief Clinical Officer ..... 686-8113  
FGP Risk Management ..... 614-2082  
IT Help Desk ..... 686-8555  
Communications .....  
686-8990  
Creative Services ..... 686-5570  
Public Safety ..... 686-7777



## LearnOnDemand Tuesday Noon CE Series

**This weekly, multidisciplinary Tuesday Noon teleconference focuses on chronic disease, healthcare trends and interprofessional collaboration. All disciplines are welcome and encouraged to participate.**

**LearnOnDemand (LOD)**, a product developed under the Institute for Digital Health & Innovation (IDHI), allows users to track all their educational hours and credits earned inside or outside the program.

**LearnOnDemand.org** is the website portal that allows health care professionals, at any time, to hear lectures and take classes online to earn continuing education (CE) credits.

The site also is compliant with the CE requirements for all three national accrediting organizations for physicians, nurses and pharmacists. Among the other health professions to which LOD is approved to offer continuing education are health educators, registered dietitians, case managers, lactation consultants, physical therapists, respiratory therapists and emergency medical technicians.

Many courses on LearnOnDemand.org have been approved for *AMA PRA Category 1 Credit™*.

For information regarding LearnOnDemand and what it can offer you contact: [idhi@uams.edu](mailto:idhi@uams.edu) | **1-855-234-3348**

## MedNews Plus

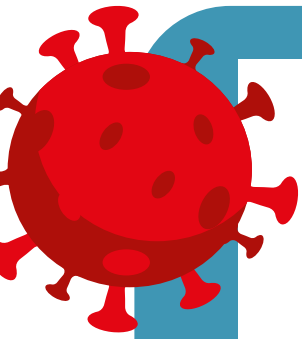
is an email news subscription that provides medical professionals with:

- **Breaking medical news and conference coverage:**
  - according to specialty
  - pulled from over 300 sources, including over 100 of the top medical journals and over 100 of the top medical meetings that take place around the world each year.
- **Nearly 800 hours of AMA PRA Category 1™ CME credit for physicians each year (nearly 1,000 hours of CE for nurses annually),**
- **Important UAMS news and updates.**

MedNews Plus is available for all medical professionals, including practice managers, who can sign up as a “health administrator” and follow the “practice management” topic. Subscribers will receive a morning email, branded as UAMS, only when there is breaking medical news in the specialty(s) to which they subscribe. They can edit their subscription or unsubscribe at any time.

**To register, visit [UAMS.MedNewsPlus.com](http://UAMS.MedNewsPlus.com).**





## Coronavirus Resources for Providers

UAMS Health has compiled a trusted collection of resources on COVID-19 for health care providers available at [UAMS.Health/COVIDresources](https://www.uams.edu/Health/COVIDresources)

### Examples include:

- Clinical information for COVID-19 in pregnancy
- Donning and doffing procedures
- Extended use and limited reuse of PPE and N95 masks
- Guidelines for risk stratification, testing, placement and isolation
- Outpatient clinical testing guidance
- Updated screening locations and access times
- Women's health telemedicine toolkit
- WHO and CDC resources
- UAMS College of Public Health COVID-19 Modeling Update

UAMS continues to offer telehealth screenings at [UAMS.Health/HealthNow](https://www.uams.edu/Health/HealthNow).

Direct patients to call the UAMS screening hotline at **1-800-632-4502**.

### COVID-19 DRIVE-THRU SCREENING

**Clinic Phone Number** (800) 632-4502

**Registration Upon Arrival** (501) 296-1531

The UAMS drive-through screening location: The corner of Shuffield Drive & Jack Stephens Drive. When you arrive at the drive-thru triage screening area, please turn off your engine and stay inside your car. Call to register. Hours are listed at [UAMS.Health/COVIDTesting](https://www.uams.edu/Health/COVIDTesting).

### Learn More:

[UAMS.Health/COVID19](https://www.uams.edu/Health/COVID19) | [healthy.arkansas.gov](https://www.healthy.arkansas.gov) | [cdc.gov](https://www.cdc.gov) | [who.int](https://www.who.int)

## Preceptor Opportunities

*We need you!*

- Are you board certified?
- Do you enjoy teaching medical students?
- Do you want to train your next partner?

### PARTICIPATING PHYSICIANS RECEIVE:

- 20 hours AAFP prescribed credit
- UAMS adjunct faculty appointment
- Free online CME through UAMS LearnOnDemand
- Digital access to the UAMS Library, UpToDate, PubMed, Medline and more

For more information or to sign up:

**Jessica Bursk**

[JLBURSK@UAMS.EDU](mailto:JLBURSK@UAMS.EDU) | 501-686-5260





## **AR-Connect A VIRTUAL MENTAL HEALTH AND SUBSTANCE ABUSE PROGRAM**

*UAMS AR-Connect is there for you, whenever you need it.*

The University of Arkansas for Medical Sciences' AR-Connect call center is open 24 hours a day, seven days a week, answering the needs of Arkansans dealing with any number of mental health issues. The caller is evaluated by a nurse triage team and, if needed, contacted by another medical professional within 24 hours. To maintain social distancing, the contact will either be by phone or live video, depending on the patient's preference. The virtual clinic operates Monday through Friday, 8 a.m. to 5 p.m.

AR-Connect's clinical team has been trained to recognize the needs of those dealing with mental issues, whether they are a single parent struggling to support their family or a medical professional on the front lines of the COVID-19 pandemic.

The goal of AR-Connect is to help those Arkansans needing immediate care get the assistance they need and eventually connect them with treatment options available in their local area. Health insurance is not required to access AR-Connect's mental-health professionals and patients will not be responsible for any payments outside of what is covered by their insurance plan.



*This material was made possible by Grant Number 1H79FG000240-01 from the Substance Abuse and Mental Health Services Administration (SAMHSA) and the Arkansas Department of Human Services Division of Aging, Adult and Behavioral Health Services (DAABHS).*



# Help Connect Arkansans with UAMS Health Research

## ARresearch.org

Arkansans have a simple way to participate in health-related studies thanks to **ARresearch.org**, an innovative program of the UAMS Translational Research Institute.

This online registry, also available in Spanish, now includes more than 8,000 Arkansans from all 75 counties.

**When filling out the form, registrants choose from** 31 health interest areas, such as COVID-19, weight management, cancer, heart disease and a healthy volunteer option. UAMS researchers may invite registrants to participate if their study aligns with the registrants' selected health interest areas.

Many studies, such as online surveys, do not require travel, and some provide convenience with procedures conducted at UAMS Regional Campuses. Compensation is also provided in many studies.

The ARresearch registry form takes about five minutes to complete and does not obligate any registrant to participate in a study. Volunteers may also leave a study at any time.

As the state's only academic medical center, UAMS conducts translational research that benefits communities in Arkansas and beyond. Study volunteers are crucial for helping researchers meet their enrollment goals and improving the quality of their findings.

**Please help spread the word to your patients and others about this unique opportunity.**

For more information, visit **ARresearch.org**, or contact Sandra Hatley, HatleySandraE@uams.edu.



Translational  
Research Institute



**MedJobArkansas.com**

## Physician Recruitment & Provider Placement

The UAMS Physician Recruitment & Provider Placement Program has a team of Placement Specialists dedicated to serving the recruitment needs of UAMS, UAMS Regional Programs and our partner communities by:

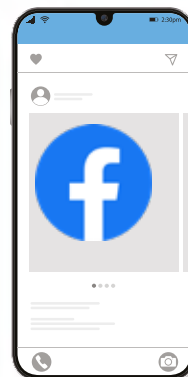
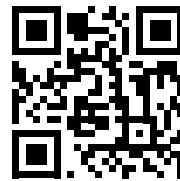
- Assisting with the development of detailed profiles of available opportunities
- Promoting practice opportunities to UAMS residents and practicing physicians
- Utilizing national and local internet job boards
- Attending regional and virtual career fairs
- Referring candidates to partnering communities
- Providing professional development training to community hospitals and providers through LOD

Contact **Carla Alexander** at **501-686-7934** or **carla@uams.edu** for details on the MedJobArkansas Contract.

### Candidate Opportunities & Resources

The Physician Recruitment & Provider Placement Program is available to assist candidates with professional development training and provide practice opportunities available throughout Arkansas.

Find detailed opportunities and register on the Job Board at **medjobarkansas.com**. CV tips, templates, and samples are available on the site.



**Follow us on Social Media**

# UAMS Library Databases & Resources

*Do you need to search the current clinical literature or find information on clinical trials? The following databases are available free online:*

- **MEDLINE via PubMed.gov** – includes over 30 million citations in biomedical & life sciences journal literature. Indexed records go back to 1946. Some older records may go back to late 1700s. Some free full text is available.
- **PDQ (Physicians Data Query) via Cancer.gov** – comprehensive evidence-based information about cancer treatment, screening, prevention, genetics and supportive care plus over 5,000 open NCI clinical trials. Provides a genetic services directory. Most summaries available in Spanish. **cancer.gov/publications/pdq**
  - **A to Z List of Summaries** at: **cancer.gov/publications/pdq/information-summaries/adult-treatment**
- **ClinicalTrials.gov** – provides current information for locating federally and privately supported clinical trials for diseases and conditions in humans. Includes trial's purpose, who may participate, locations (U.S. and International) and contacts. Filters for finding studies with results are available.
- **Drug Information** – National Library of Medicine – provides multiple drug-related databases including:
  - **Drug Information Portal** [81,479 drugs from clinical trial stage to marketplace] **druginfo.nlm.nih.gov/drugportal/drugportal.jsp**
  - **Drugs, Herbs & Supplements** [effectiveness, dosage, & drug interactions for dietary supplements & herbal remedies] **medlineplus.gov/druginformation.html**
  - **PillBox** [pill identification w/ imprint, shape, color, etc.] On January 29, 2021 the National Library of Medicine's Pillbox program will be retired. For further information please see the *NLM Technical Bulletin*.
  - **DailyMed** [FDA labels for 134,697 marketed drugs] **dailymed.nlm.nih.gov/**

## ADDITIONAL DATABASES

For a list of free biomedical resources for Arkansas health professionals, see: **libguides.UAMS.edu/services-to-state/ark-healthcare-professionals**

**UAMS Library's COVID-19 Resources page (est. 1-2020) provides information for health professionals, librarians, educators, researchers, the public and more.**

## FULL TEXT ARTICLES

*Do you need free full text articles or the ability to order documents from a medical library? The following options are available:*

### Free Full Text:

- **PubMed** – some free full text articles ARE available via PubMed Central buttons. Use the free full text filter on the left navigation bar. **pubmed.gov**
- **Directory of Open Access Journals** – covers free, full text, quality-controlled scientific and scholarly journals from 123 countries. Currently there are 15,632 journals under 20 categories. The Medicine section has 16 subsections including GYN/OB, internal medicine, pediatrics, pharmacy and surgery. **doaj.org/**

### Full Text Access

- **PubMed** – many links to publishers sites [usually require paid subscription].
- **Loansome Doc (LD)** – the electronic document ordering system in PubMed – must have an account with the UAMS Library or a UAMS Regional Center library. (Fee-based.) Includes Interlibrary Loans (ILLs) from other medical libraries outside of Arkansas. UAMS Library's ILL/LD Office is: 501-686-6744. See regional center map and contact information at: **libguides.uams.edu/services-to-state/regional-center-libraries**

## TRAINING

Would you like to learn how to use PubMed & other clinical and patient education resources to the best of your ability? The UAMS Library offers free training for individuals or groups on these resources.

**Please contact Education & Research Services at: 501-686-6734.**

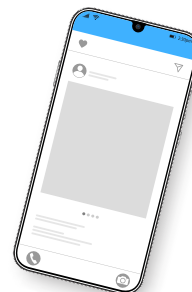
Remote training sessions are available viz Zoom. You can also request a class via: **uams.libwizard.com/f/class-instruction-request**

## TIME A PROBLEM?

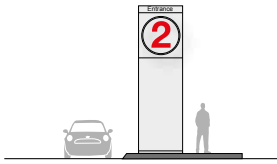
If you don't have time to do searches yourself or can't find what you're looking for, contact the UAMS Librarians who can provide FREE expert literature searches. Results include citations and abstracts. We also provide free consultations to help with search strategies, auto alerts or reference questions. **Call 501-686-6734**

**or email us at: LibraryReferenceDesk@uams.edu.**

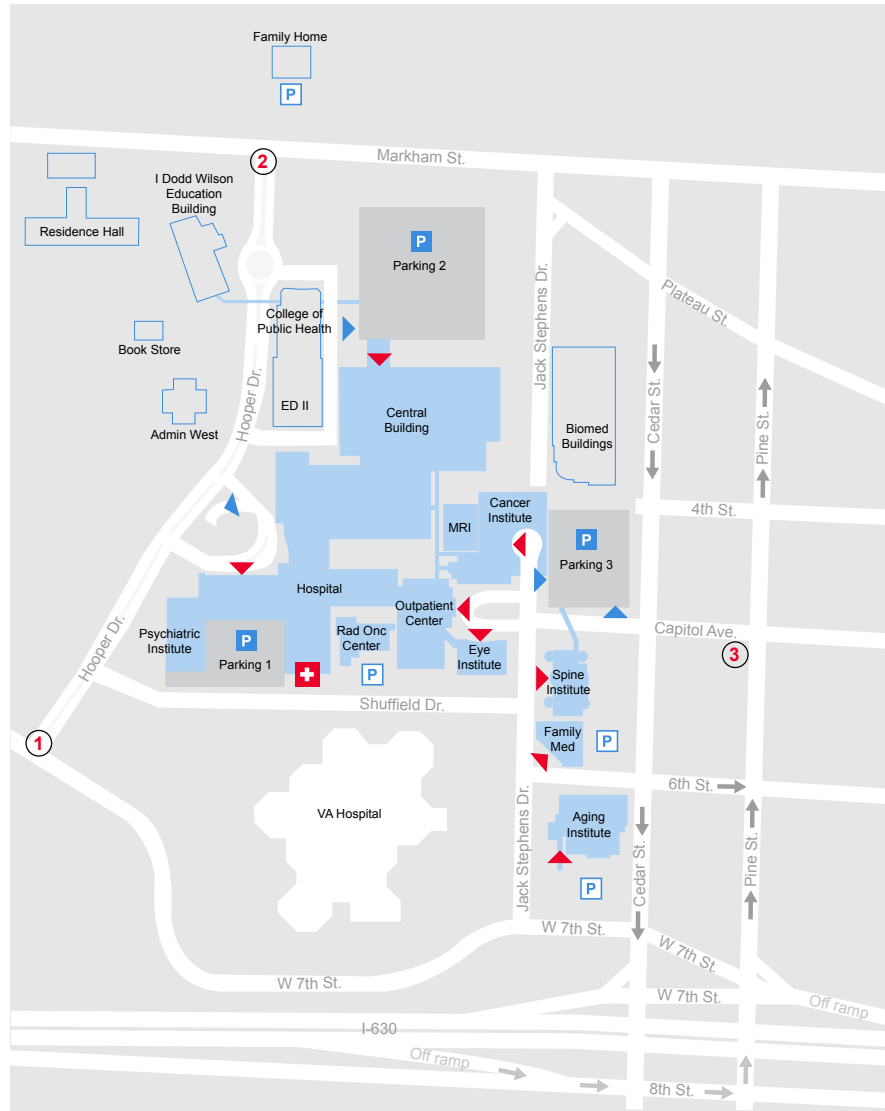
Follow us on Facebook or Twitter for news about the Library and biomedical information resources.



**Numbered  
Entry Markers**



- ① **Parking 1**  
Hospital  
Psychiatric Institute  
Emergency
- ② **Parking 2**  
Central Building
- ③ **Parking 3**  
Cancer Institute  
Outpatient Center  
Eye Institute  
Spine Institute



+ Emergency  
 P Parking  
 ▶ Building Entrance  
 ▶ Parking Entrance

For more UAMS locations and maps,  
please visit [UAMS.Health/Maps](http://UAMS.Health/Maps)

