



UAMS Opens Breast Center, Expands Cancer Care Services and Locations

In an ongoing effort to increase access to comprehensive care, the University of Arkansas for Medical Sciences (UAMS) has seen three significant developments in the past few months.

On April 5, the **Breast Center** moved to a new, spacious location on the Little Rock campus, offering breast imaging services and access to specialists under one roof.

On May 25, UAMS broke ground



The new Breast Center, located inside the Winthrop P. Rockefeller Cancer Institute on UAMS' Little Rock campus.

on its Little Rock campus for a new **Radiation Oncology Center**, which will be home to Arkansas' first Proton Center, of which fewer than 40 exist nationwide.

Later this summer, UAMS and Baptist Health will open the **UAMS Baptist Health Cancer Center** on Baptist's North Little Rock campus, expanding on an existing partnership. It will be the first of many locations.

UAMS Health Breast Center

In the Breast Center on the third floor of the Winthrop P. Rockefeller Cancer Institute, patients can obtain everything from screening



The UAMS Baptist Health Cancer Center on Baptist Health's North Little Rock campus.

to diagnostic mammograms, both still with same-day results, to more advanced testing and procedures.

"Not only will we continue to offer the outstanding services we always have, but those services will now be coupled with the comforting environment our patients deserve," said Gwendolyn Bryant-Smith, M.D., the director.

Previously housed in the UAMS Outpatient Center, the new center occupies about 12,000 square feet and includes five mammography rooms, five ultrasound rooms, space for image-guided biopsies, spacious dressing rooms and a waiting area filled with natural light.

The center's multi-disciplinary team includes fellowship-trained breast surgeons, fellowship-trained breast radiologists, medical oncologists, radiation oncologists, plastic surgeons, geneticists, APRNs, RNs, pathologists, behavioral medicine specialists and social workers.

Named a Breast Center of Excellence by the American Center of Radiology, the center has access to

the most advanced drug therapies and technology, offers all forms of breast imaging, all-digital mammography and 3-D mammograms, and has bilingual physicians.

"The Winthrop P. Rockefeller Cancer Institute has always had a first-rate, multidisciplinary breast-care clinical team. Now they have a facility to match that quality," said Michael J. Birrer, M.D., director of the Cancer Institute.

"It's so important when a woman gets her mammogram that she can have a complete workup at that time," said Ronda Henry-Tillman, M.D., director of breast surgery.

To make a referral, call 501-526-6100.

UAMS Baptist Health Cancer Center

Meanwhile, UAMS' plan to expand cancer services to residents of all corners of the state shifted into high gear through a joint effort with Baptist Health.

UAMS' team of cancer specialists is using Baptist's existing network of hospitals and clinics to provide comprehensive care including medical oncology, infusion therapy and radiation therapy services at locations that will increase over time.

Each location will be fully staffed by UAMS faculty and clinical teams including nurses, radiation therapists, social workers and nutritionists.

While the first is scheduled to open later this summer, the second is planned for El Dorado and involves a third partner - the Medical Center of South Arkansas. A three-story building to be constructed on the hospital campus

will be the home of UAMS' South Regional Campus in El Dorado and will also include full-service oncology care provided by UAMS as well as a satellite UAMS Institute on Aging clinic.

"It's a wonderful opportunity because El Dorado is located in southern Arkansas, which is really underserved in regard to cancer care," Birrer said. "There are high incidences of mortality and poor access to cancer treatment, so we see this as UAMS' mission to extend our care to our underserved populations. And the care we are going to be providing will be superior because we have access to clinical trials and state-of-the-art treatment and drugs."

By expanding clinical trials statewide, UAMS can enroll a more diverse population of participants, helping to meet National Cancer Institute (NCI) Designation requirements.

UAMS Health Radiation Oncology Center

The new **Radiation Oncology Center**, expected to open in 2023, will bring state-of-the-art proton therapy to Arkansas.

An alternative to radiation therapy, proton therapy uses a precisely focused beam to target tumors, often in hard to reach areas, without affecting surrounding tissue. Proton therapy is particularly effective in treating solid cancer tumors, including



An artist's rendering of the new Radiation Oncology Center on UAMS' Little Rock campus.

tumors of the brain, spine, head and neck, lung, prostate, colon, and some breast tumors. It is ideal for pediatric patients.

UAMS is partnering with Arkansas Children's, Baptist Health and Proton International. The Radiation Oncology Center will occupy 53,249 square feet on three floors, connected to UAMS' Parking Deck 3 by a heated and cooled skywalk.

The current radiation therapy center will move to the new building's first floor and will include three new linear accelerators, each with expanded technological capabilities.

The first floor will also include a computerized tomography (CT) room, treatment rooms, physician offices and room to expand.

The second floor will house the proton machine, CT, a high-dose radiation (HDR) room, gowning rooms, recovery rooms, an anesthesia room, eight exam rooms, work rooms and physician offices.

The third floor will consist of mechanical and storage space.

June 2021 Message from Dr. Seupaul



Dear Colleagues,
As you have probably heard, a new federal rule arising from the 21st Century Cures Act of 2016 requires

all health care providers in the United States to provide patients immediate access to their electronic health records.

This means that patients may receive information about their lab or test results, learning about a potentially serious diagnosis, before their provider can discuss the results with them. In response, UAMS providers are discussing potential diagnoses and follow-up care with their patients before the results come in.

UAMS providers also are asked to contact patients within two business days after the release of any abnormal results that require follow-up.

Patients now have immediate access to lab and clinical notes, sensitive pathology results, PET scans, genetic testing and HIV results, progress notes previously restricted by a blanket department order, laboratory and pathology reports, behavioral health progress notes, H & Ps, discharge summaries, consult notes, medications, assessments and treatment plans, though there are limited exceptions.

UAMS is working to understand the full impact of this change. For questions or concerns, please email informationblocking@uams.edu.

Thank you for your continued support and partnership in the care of your patients.

Thank you,

Rawle A. Seupaul, M.D.
Chief Clinical Officer
UAMS Medical Center
Stanley E. Reed Professor & Chair
Department of Emergency
Medicine
UAMS College of Medicine

Say Goodbye to Faxing with EpicCare Link

EpicCare Link is a secure, web-based portal for referring physicians to track patient progress and treatment while at UAMS and provides secure messaging for you to offer electronic consults. First Access allows users to add patients to their accounts. Account renewal has been updated from 90 days to 180 day to make it more user-friendly.

How to register:

- Log onto UAMSHealth.com/MD
- Complete the EpicCare Link access request form
- UAMS IT will e-mail your user name and password

Questions? Melanie Meyer, MEd, melanie@UAMS.edu or 501-686-8206

News to Know: Updates from UAMS

UAMS Named Center of Excellence for Huntington's Disease Treatment

The Huntington Disease Society of America recently named the University of Arkansas for Medical Sciences (UAMS) one of 54 Centers of Excellence for the treatment of the disease, a fatal genetic disorder that causes the progressive breakdown of nerve cells in the brain.

"Our multidisciplinary team comprised of neurologists, physical therapists, speech pathologists, social workers, nutritionists and geneticists has worked hard to bring the best care to patients with Huntington's disease and their families in Arkansas," said **Tuhin Virmani, M.D., Ph.D.**, director of the UAMS Movement Disorders program. He and **Rohit Dhall, M.D.**, the director of neurodegenerative disorders in the Department of Neurology, co-direct the clinic. *To make a referral, call 501-686-5838.*

Virtual AFib Clinic Allows Team Approach Without Travel

Atrial fibrillation patients across the state can now consult virtually with a team of multi-disciplinary experts at UAMS to address medical, psychological and lifestyle concerns, saving time and travel.

The country's first successful virtual A-Fib clinic allows patients to connect individually by computer with members of a multi-disciplinary team at UAMS to discuss diet, stress, exercise, heartbeat control, heart rhythm control or blood clotting concerns. Team members then meet with each other to devise individualized patient plans.

The idea for the virtual clinic came from a growing recognition by cardiologists that AFib patients need comprehensive care to address multiple symptoms and prevent strokes.

Paul Mounsey, M.D., Ph.D., chief of UAMS' Division of Cardiovascular Medicine; **Subodh Devabhaktuni, M.D.**, a heart rhythm specialist; and **Irion "Chip" Pursell, RN**, director of research in the division, developed the

program by fine-tuning an earlier non-virtual prototype they initiated at East Carolina University (ECU) in Greenville, North Carolina.

They use UAMS' virtual health infrastructure to connect AFib patients to UAMS specialists in cardiac electrophysiology, nursing, pharmacy, health psychology, exercise physiology, sleep medicine and nutrition.

To make a referral, call 501-526-4747.

Susan Smyth, M.D., Ph.D., Named Dean of the UAMS College of Medicine

UAMS' College of Medicine welcomed a new dean June 1 to replace Christopher Westfall, M.D., who retires Aug. 1 after 24 years at UAMS.

Susan S. Smyth, M.D., Ph.D., also named executive vice



chancellor, comes to Arkansas from the University of Kentucky College of Medicine, where she was chief of the Division of Cardiovascular Medicine and director of the Gill Heart and Vascular Institute.

A nationally known cardiologist and translational scientist, Smyth is an elected member of the American Society for Clinical Investigation, immediate past president of the Association of University Cardiologists and has served on the CTSA Steering Committee for the National Center for Advancing Translational Science.

Saira Hassan, M.D., Joins Cancer Institute

Saira Hassan, M.D., who specializes in gastrointestinal and genitourinary cancer, has joined the UAMS Winthrop P. Rockefeller Cancer Institute.



She is also an assistant professor in the Division of Hematology/Oncology in the College of Medicine's Internal

(Continued on page 4)

Physician Relations

Physician Relations & Strategic Development

Chief Clinical Officer

Rawle A. Seupaul, M.D.
RASeupaul@uams.edu

Director

Melanie Meyer, M.Ed.
melanie@uams.edu

Manager

Carla Alexander, M.Ed.
carla@uams.edu

Byron Jarrett
physicianrelations@uams.edu

Wendy Sheridan
wendy@uams.edu

CONSULT

is produced by the UAMS Office of Communications & Marketing and Physician Relations & Strategic Development.

Editor

Linda Satter

Designer

Norma Edwards

Vice Chancellor for Communications & Marketing

Leslie Taylor



CONSULT

Quiz of the Month

QUESTION

What are the contraindications for exercise EKG test?

Unstable angina, severe uncontrolled hypertension, critical aortic stenosis or critical left ventricular outflow tract obstruction, uncompensated heart failure, recent or active cerebral ischemia, aortic dissection, and inability to exercise.

ANSWER

For a list of new physicians, visit UAMShealth.com/MD

(Continued from page 3)

Medicine Department.

Hassan received her medical degree at the King Edward Medical College in Lahore, Pakistan. She completed an internal medicine residency training at the University of Texas in Houston, was a staff physician at the Veterans Affairs Hospital in Dallas and completed a fellowship in hematology/oncology at Baylor College of Medicine in Houston. **To make a referral, call 501-395-0484.**

Taqi Zafar, M.D., Epilepsy Specialist, Joins UAMS Health

Taqi Taimur Zafar, M.D., a fellowship-trained epilepsy specialist, has joined the UAMS Arkansas Epilepsy Center, the only Level 4 Epilepsy Program in the state.



Zafar, an assistant professor in the Department of Neurology's adult epilepsy program, will be seeing patients at the UAMS Health Epilepsy and Neurology Clinic at the Freeway Medical Tower in Little Rock.

He obtained his doctorate in 2008 at Shifa College of Medicine in Islamabad, Pakistan. He completed a neurology residency at SUNY Upstate Medical University in Syracuse, N.Y., followed by

an epilepsy fellowship at Baylor College of Medicine in Houston. **To make a referral, call 501-686-7237.**

Sheena CarlLee, M.D., Joins UAMS as Internal Medicine Specialist

Sheena CarlLee, M.D., has joined the internal medicine faculty team on the UAMS Northwest Regional Campus, and is seeing patients in the UAMS Health Neighborhood Clinic -- North Street in Fayetteville.



She is board-certified by the American Board of Internal Medicine and specializes in complex and chronic disease management, adult wellness visits, acute care visits and women's health.

She received her medical degree in 2014 from UAMS and completed her internal medicine residency at the University of Iowa. She practiced in North Carolina before moving to Fayetteville in 2020.

To make a referral, call 479-713-8701.

Brad Reeves, M.D., Joins Orthopaedics and Sports Medicine Clinic in Fayetteville

Brad Reeves, M.D., a board-certified orthopaedic sports medicine surgeon specializing in knee and shoulder reconstruction

and trauma, is now seeing patients at UAMS' Orthopaedics and Sports Medicine clinic in Fayetteville. He



is an assistant professor in the Department of Orthopaedic Surgery.

Reeves serves as the head orthopaedic surgeon for the Razorback football team and co-team physician for all 19 Razorback sports programs at the University of Arkansas in Fayetteville.

To make a referral, call 479-966-4491.

Sharon Reece, M.D., joins UAMS Health Family Medicine

Sharon Reece, M.D., has joined the Department of Family and Preventive Medicine and is seeing patients at the UAMS Health Family Medicine Center in Fayetteville and Springdale.



She completed medical school, as well as her residency in family medicine and an emergency medicine fellowship, at the University of Toronto in Canada. She earned her bachelor of science degree at the University of British Columbia.

To make a referral, call 479-521-8260.

UAMS PHYSICIAN RECRUITMENT & PROVIDER PLACEMENT PROGRAM

The UAMS Physician Recruitment & Provider Placement Program has a team of placement specialists dedicated to serving the recruitment needs of our partner communities, UAMS Regional Campuses and UAMS faculty. Physician/provider opportunities are available in all specialties throughout Arkansas.

FEATURED JOBS

Chief of Electrophysiology: UAMS Cardiovascular Medicine is seeking a cardiac electrophysiologist to serve in an emergent new service line and to serve as our chief of electrophysiology.

Rural Opportunities: Both family medicine and specialty opportunities are available, including positions in family medicine in Dumas and obstetrics/gynecology in Crossett.

Specialty Opportunities: New opportunities available in cardiology, emergency medicine, gastroenterology, neurology, neurosurgery, med/peds, oncology, surgery and urology.

Recruitment services contact: Carla Alexander: 501-686-7934 or carla@uams.edu

For a complete listing of job descriptions and opportunities, visit: MedJobsArkansas.com

Follow MedJobArkansas:    

UAMS Pioneers Minimally Invasive Spine Surgery

A new minimally invasive surgical technique at UAMS is streamlining spine surgery, allowing more precise work and speeding up patients' recovery time.



Called Lateral-in-Prone or 'LIP,' the new technique allows surgeons to operate on patients through their back as they lie face-down, or prone, as spine surgery has traditionally been performed, while simultaneously accessing the area of concern from the side.

Operating on a patient's spine from the side was introduced at UAMS seven years ago by **Noojan Kazemi, M.D.**, an associate professor in the UAMS Department of Neurosurgery and director of UAMS' Spine Neurosurgery Program. It gives surgeons more direct access to the lumbar spine without moving the nerves or opening up muscles in the back.



Before and after photos of the 59-year-old man whose back deformity was repaired using the minimally invasive LIP technique.

But until the last year or so, spine surgeons couldn't simultaneously access problem areas from the posterior and lateral side of the patient. They would have to pause between the two procedures to break down the operating field and turn the patient, which used resources and added infection risks and extra hours to often already long surgeries.

The new 'LIP' technique, largely created at UAMS, "has suddenly led to a huge increase in our capacity to treat more conditions efficiently," Kazemi said.

UAMS spine surgeons have performed about 40 of the LIP procedures, and are training other spine surgeons in the revolutionary technique.

In one case, a 59-year-old man who had back surgery at another institution came to UAMS leaning forward (termed a 'kyphotic deformity') at a 53-degree angle. He had weakness in his legs and severe back pain due to nerves pinched between two lumbar vertebrae. Surgical screws were loose, and he had an infection – "a dire situation," Kazemi said.

A wedge-like titanium expandable cage implanted from the side between the two compressed vertebrae while surgeons worked through the back to replace instrumentation corrected the deformity and allowed the patient to stand up straight again.

Kazemi predicts the technique will be used to treat both simple and complex spine conditions.

To make a referral, call 501-686-7928. ■

RONDA HENRY-TILLMAN, M.D.

Chief of Breast Oncology at UAMS
Winthrop P. Rockefeller Cancer Institute



What inspired you to become a doctor? I was inspired to become a doctor because I care, and I wanted to provide service and resources to impact the health of individuals around the world.

What do you like most about your specialty? What I like most is having the skill set and expertise to help change outcomes in a stressful situation. Also, I like that this specialty requires an interdisciplinary comprehensive team approach providing excellence in breast care.

What makes you unique among your peers? I think my emphasis on communicating with my patients and my passion for their well-being makes me unique. I think caring for my patients goes beyond a diagnosis and treatment plan to include understanding any external factors that may limit or enhance their care experience.

Why did you come to UAMS? I came to UAMS because it was a leading institution in surgical and comprehensive cancer care.

What are your clinical specialties? I am a surgeon with specialized training in the management of all aspects of the disease of the breast. My surgical expertise focuses not only on the removal of breast cancer but also on providing patients with the best oncoplastic surgical outcome. Oncoplastic surgery is defined as removal of the cancer with reconstruction of the cavity or the breast after removal. This may include lumpectomy with tissue rearrangement, lumpectomy with reduction and symmetry surgery, correction of ptosis or drooping of the breast with a lift or mastopexy. I am also a leader in the flat mastectomy with removal of the lateral fat pad via a technique called the Angel Wing Rearrangement technique.

What is the phone number doctors can use to make a referral to you? Call 501-686-6080 or 501-686-8522 for referrals. Appointments are always open at your convenience. Our multispecialty breast team provides one of the most comprehensive breast care in the world.

MEDICAL CASE STUDY:

Radiation Lobectomy for Colorectal Cancer & Liver Metastasis

Initial Contact

A 68-year old male presented to UAMS with distal rectal cancer.

Assessment

Further imaging revealed the cancer had metastasized to the liver, as is the case with 30% of colorectal cancer patients at the time of diagnosis. The patient had multifocal disease in the right lobe of the liver.

Historically, the patient would not have been a good candidate for liver resection, because it would have left him with an insufficient liver remnant to adequately function. This has been the case for many patients in the past.

Radiation lobectomy, a relatively new technique performed by interventional radiologists, allows for local control of the metastatic lesions in the right side of the liver, contralateral liver hypertrophy in the left side of the liver and time for the patient to complete a systemic chemotherapy regimen.

The patient was assessed by medical oncologist **Jibran Ahmed, M.D.**, who set a course for

neoadjuvant chemoradiation for the primary tumor, radiation lobectomy for the liver and synchronous surgery for both sites.

Procedures

Radiation oncologist **Leslie M. Harrell, D.O.**, began the patient's radiation treatment for rectal cancer.

Concurrently, the patient underwent a radiation lobectomy with interventional radiologist **James C. Meek, D.O.**, which treated the tumors on the right side of the liver and grew the liver on the left side by 30-40%. During the procedure, small radioactive beads were injected into the hepatic artery feeding the hepatic lobe associated with tumor growth. This encouraged growth in the contralateral hepatic lobe as well as localized tumor control.

Following neoadjuvant therapy, the patient underwent a combination surgery during which colorectal surgeon **W. Conan Mustain, M.D.**, performed a laparoscopic low anterior resection and liver transplant/hepatobiliary

surgeon **Lyle J. Burdine, M.D., Ph.D.**, performed a right-side hepatectomy.

Follow Up

The patient recovered well and was able to leave the hospital after five days. Testing revealed the surgeons had margins free of disease, with subsequent imaging procedures scheduled at UAMS to monitor for reoccurrence over the next several years.

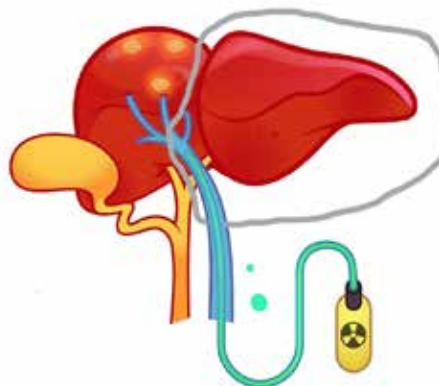
Discussion

UAMS is one of the few facilities in Arkansas with fellowship-trained specialty teams in colorectal surgery, hepatobiliary surgery and interventional radiology, in addition to the support of a cancer center with oncologists, radiation oncologists and specialized staff at each level of treatment. The teams work together to prepare the patient for treatment and surgery and set them up for the best possible post-operative quality of life and functionality.

"This combination of care under one roof is ideal for patients



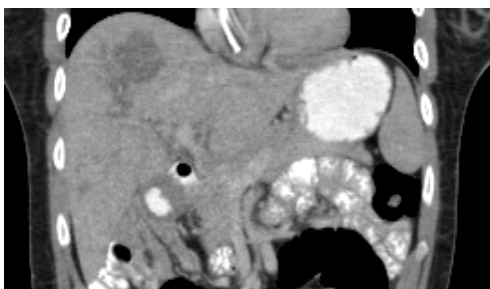
1.



2.



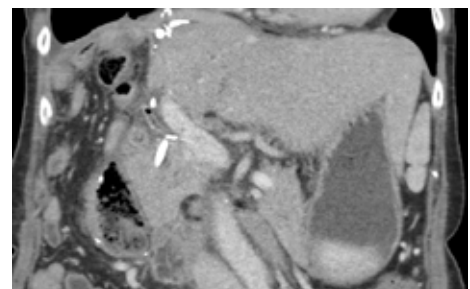
3.



Liver with colon cancer in the right lobe.



Injection of Y90 therapy into right lobe of liver resulting in local regional tumor control and left lobe hypertrophy



Resection of tumors from the right lobe, with hypertrophied left liver lobe.

like these,” Burdine said. “It is multidisciplinary care that is a true testament to what sets UAMS apart for colorectal cancer care.”

Burdine said the team provides consults on such cases and encourages any interested physician to reach out before the patient is scheduled for surgery.

“Sometimes we get referrals of patients who have already had one part of needed treatments — maybe they had the liver radiated or colon surgery, and they are referred to UAMS for the rest,” Burdine said.

“In actuality, we find that patients with both colorectal and liver concerns fare better if they can be treated comprehensively by these teams at once.”

In addition to the multidisciplinary approach, Burdine said the expertise of interventional radiology is key in these cases to grow the liver and reshape it in a way that lays the groundwork for better surgical outcomes. In addition to radiation lobectomy, the interventional radiology team can also provide portal vein embolization when appropriate, which uses injections of embolic material to divert blood flow from unhealthy to healthy parts of the liver and encourage growth of health liver tissue.

To make a referral, call 501-626-2381 or visit UAMS.Health/ReferTransplant. ■

Jibran Ahmed, M.D.



Assistant Professor
Department of Internal Medicine - Hematology and Oncology
UAMS College of Medicine

Education

Doctor of Medicine, King Edward Medical University, Lahore, Pakistan

Residency

Internal medicine, John H. Stroger Hospital, Chicago

Fellowship

Hematology/oncology, Westchester Medical Center and New York Medical College, Valhalla, New York

Lyle J. Burdine, M.D., Ph.D.



Assistant Professor
Department of Surgery - Transplantation/ Hepatobiliary Surgery
UAMS College of Medicine

Education

Doctor of Medicine, University of Texas Southwestern Medical Center, Dallas

Residency

General surgery, UAMS

Fellowship

Multiple abdominal transplant surgery, University of California, San Francisco

Leslie M. Harrell, D.O.



Assistant Professor
Department of Radiation Oncology

Education

Doctor of Osteopathic Medicine, University of North Texas Health Science Center, Fort Worth, Texas

Residency

Internal medicine internship, Naval Medical Center, Portsmouth, Virginia

Radiation oncology residency, University of Mississippi Medical Center, Jackson, Mississippi

Fellowship

Proton and pediatric radiation oncology, University of Texas M.D. Anderson Cancer Center, Houston

James C. Meek, D.O.



Associate Professor
Department of Radiology
UAMS College of Medicine

Education

Doctor of Osteopathic Medicine, University of North Texas Health Science Center, Fort Worth, Texas

Residency

Diagnostic radiology residency, UAMS

Fellowship

Vascular interventional radiology, UAMS

W. Conan Mustain, M.D.



Assistant Professor
Department of Surgery-Colorectal
UAMS College of Medicine

Education

Doctor of Medicine, University of Mississippi School of Medicine, Jackson, Mississippi

Residency

General surgery, University of Kentucky Medical Center, Lexington, Kentucky

Fellowship

Surgical research, Department of Surgery and Markey Cancer Center, University of Kentucky Medical Center

Colon and rectal surgery, University Hospitals-Case Medical Center, Cleveland

ADDRESS SERVICE REQUESTED

LearnOnDemand.org



All classes are FREE!

A resource of the UAMS Institute for Digital Health & Innovation, the LearnOnDemand.org web portal offers health care professionals the flexibility of earning continuing education (CE) on their own schedule, through an expanded array of teleconferences and online courses.

- Track all educational hours and credits earned inside or outside the program
- Ensure compliance with the CE requirements for the national accrediting organizations for physicians and nurses
- Earn certificates of attendance for a variety of other disciplines

LearnOnDemand.org

For information on LearnOnDemand, contact: cdheducation@uams.edu or **1-855-234-3348**.

To request speakers or topics or to learn more about how the UAMS Physician Relations & Strategic Development team can help you, visit UAMShealth.com/MD

JULY 6

Holiday Week

JULY 13

Chronic Kidney Disease Update for the Primary Care Provider

Manish Singh, M.D.
Department of Nephrology

JULY 20

Moving the Needle: Evidence Based Practices and Technology for Children and Youth with Autism: Tips and Resources

Amy Goddard, MS
Arkansas Department of Education

JULY 27

Burnout: Is it Contagious? What do we do?

Melony Hilton
SVMIC

AUGUST 3

Recognizing and Responding to Suffering

Masil George, M.D.
Department of Geriatrics

AUGUST 10

Multi-Disciplinary Management of Liver Metastases

Michail Mavros, M.D.
Department of Surgery

AUGUST 24

Transplant Oncology: Liver Transplantation for the Cure of Hepatobiliary Malignancies

Emmanouil Giorgakis, M.D.
Department of Surgery Transplant

AUGUST 31

When Patients Are Unrepresented

Laura Guidry-Grimes, Ph.D., HEC-C
Medical Humanities and Bioethics

SEPTEMBER 7

Sickle Cell Update

Collin Montgomery, APRN

SEPTEMBER 14

Surgical Treatment of Liver Cancer

Lyle Burdine, M.D.
Department of Surgery-Transplantation

SEPTEMBER 21

Moving the Needle: Feeding Issues

Janine Watson
Department of Pediatric Psychology

SEPTEMBER 28

Tweet Others as You Wish to be Tweeted: Principles to Avoid Digital-Age Disasters

Mark Hagemeyer, J.D.
Vice Chancellor of Compliance/Managing Associate General Counsel